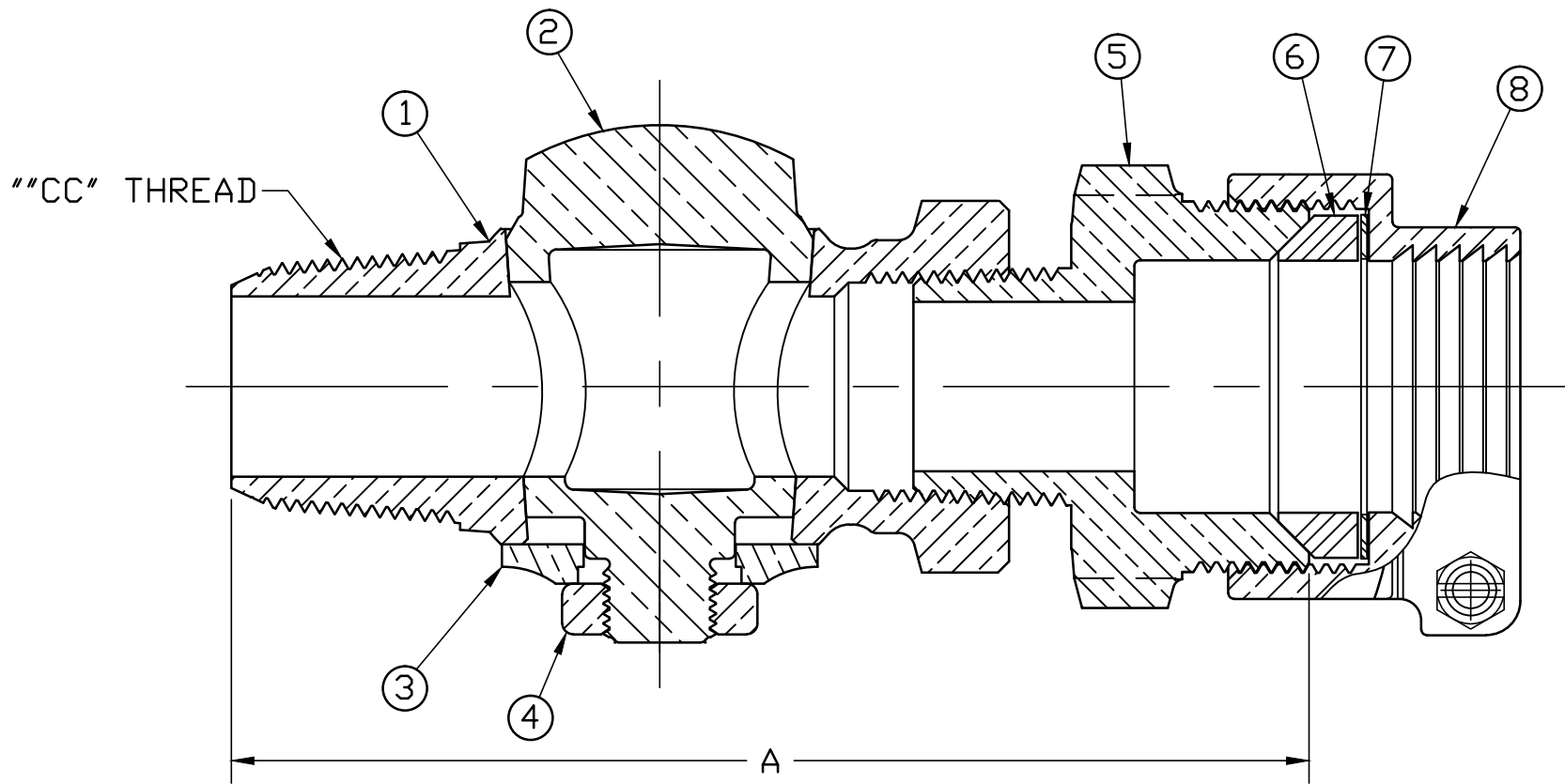


DWG NUMBER  
E3402  
JJ-MRKTG



No.	DESCRIPTION	MATERIAL
1	BODY	CAST LOW LEAD BRASS ALLOY
2	KEY	CAST LOW LEAD BRASS ALLOY
3	KEY WASHER	CAST BRASS ASTM B62 ALLOY C83600
4	KEY NUT	CAST BRASS ASTM B62 ALLOY C83600
5	SPUD	CAST LOW LEAD BRASS ALLOY
6	COMPRESSION GASKET	BUNA N ASTM D2000
7	WASHER	POLYPROPYLENE PLASTIC
8	COUPLINIG NUT	CAST BRASS ASTM B62 ALLOY C83600

VALVE SIZE	A
1"	5.98

ALL WETTED PARTS ARE LOW LEAD BRASS ALLOY

FILEPATH: PROD-ENG\JJ\SUBMITTALS\E3402

TITLE TO AND OWNERSHIP OF THIS ENGINEERING  
DATA REMAINS IN Mueller Co. NO USE IS TO BE  
MADE OF THIS DATA EXCEPT AS SPECIFICALLY  
AUTHORIZED BY Mueller Co. ASSENT ON THE PART  
OF THE RECIPIENT TO THESE CONDITIONS IS PRESUMED

						DRFTR	RWB	2/26/10	<b>JONES</b>		
						CHKR					
						ENGR					
						MGR					
									UNLESS OTHERWISE NOTED	THIRD ANGLE PROJECTION	
									SURFACE PREPARATION:		
									BREAK CORNER(S) ---- .000		
									SURFACE FINISH -- XX RMS	REF. No.	
							BY	DATE	TOLERANCE(S):		SCALE
									LINEAR ----- ± .000		
						STK No:				ANGULAR ----- ± 0°00'	
						MAT'L:					
						DESCR.					
						GROUND KEY LLB CORPORATION VALVE (AWWA TAPER x PJ IPS PE)					DWG NUMBER
REV	ECR	DESCRIPTION	DATE	BY	CHKR						E3402