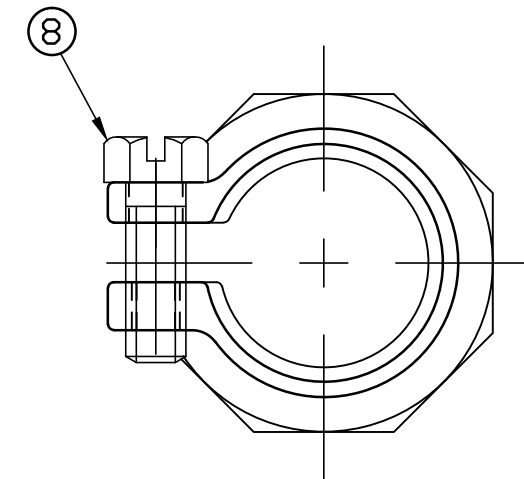
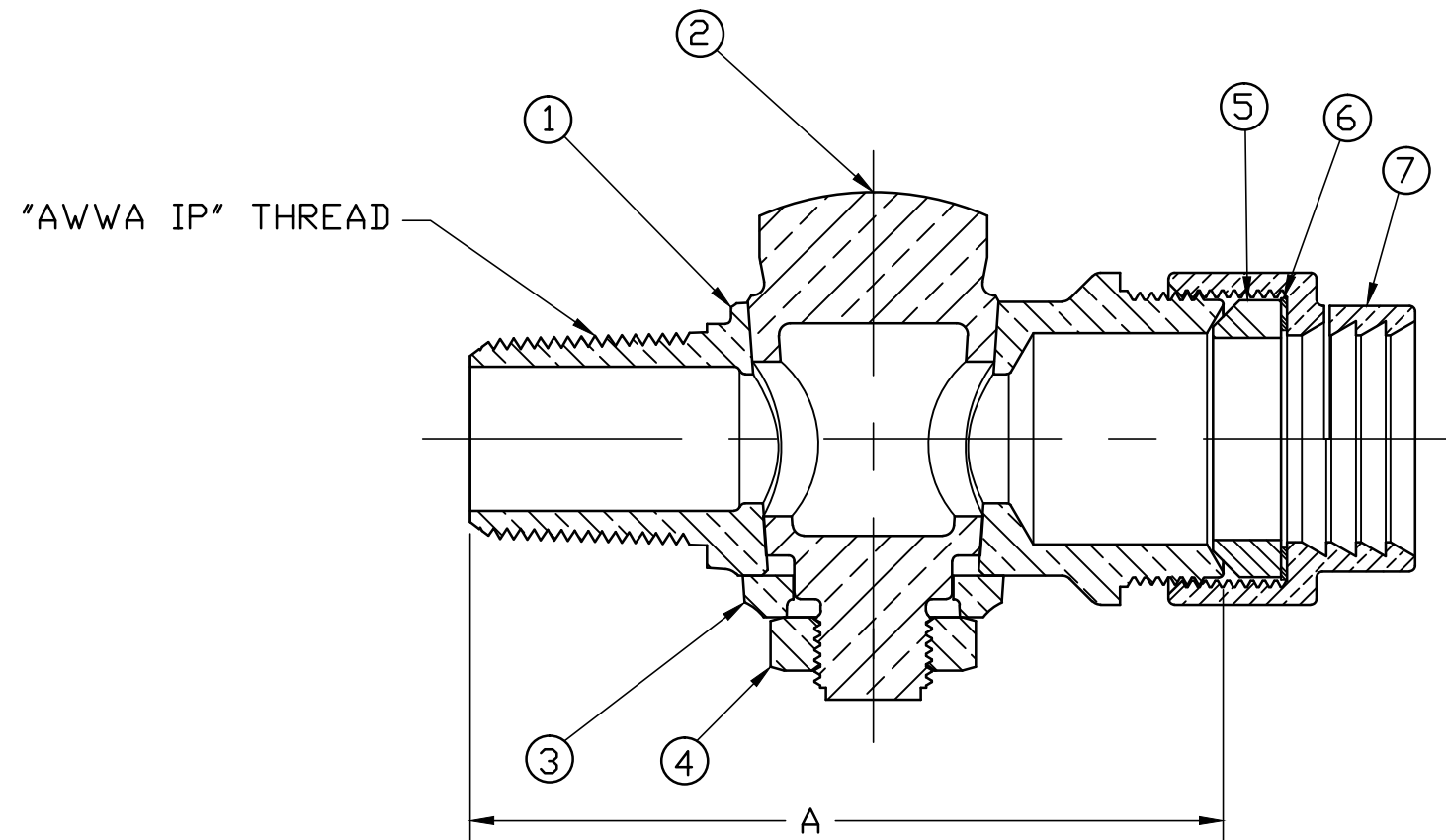


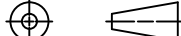
No.	DESCRIPTION	MATERIAL
1	BODY	CAST LOW LEAD BRASS ALLOY
2	KEY	CAST LOW LEAD BRASS ALLOY
3	KEY WASHER	CAST BRASS ASTM B62 ALLOY C83600
4	KEY NUT	CAST BRASS ASTM B62 ALLOY C83600
5	COMP GASKET	RUBBER CODE R93
6	WASHER	POLYPROPYLENE
7	COUPLING NUT	CAST BRASS ASTM B62 ALLOY C83600
8	CAP SCREW	304 STAINLESS STEEL



VALVE SIZE	A
3/4"	3.97
1"	5.98

ALL WETTED PARTS ARE LOW LEAD BRASS ALLOY

FILEPATH: PROD-ENG\JJ\SUBMITTALS\E3404

SEE KEY VALVE END FOR CONNECTIONS						DRFTR	RWB	3/2/10	<div style="text-align: center; font-size: 24pt; font-weight: bold;">JONES</div>	
						CHKR				
						ENGR				
						MGR				
									UNLESS OTHERWISE NOTED	THIRD ANGLE PROJECTION
									SURFACE PREPARATION:	
									BREAK CORNER(S) ---- .000	
									SURFACE FINISH -- XX RMS	REF. No.
							BY	DATE	TOLERANCE(S):	SCALE
									LINEAR ----- ± .000	
									ANGULAR ----- ± 0°00'	
						STK No:				
						MAT'L:				
						DESCR.				
						GROUND KEY LLB CORPORATION VALVE				
						(AWWA IP x PJ IPS PE)				
						DWG NUMBER				
						E3404				
D	REV	ECR	DESCRIPTION	DATE	BY	CHKR				

DWG NUMBER
E3404
JJ-MRKTG

TITLE TO AND OWNERSHIP OF THIS ENGINEERING DATA REMAINS IN Mueller Co. NO USE IS TO BE MADE OF THIS DATA EXCEPT AS SPECIFICALLY AUTHORIZED BY Mueller Co. ASSENT ON THE PART OF THE RECIPIENT TO THESE CONDITIONS IS PRESUMED